

# Metal - Heavy Metal

Metal is said to have its origins in the 60's with the advent of two groups "**The Stooges**" and "**Black Sabbath**". The Stooges were more Punk and Black Sabbath was definitively the beginning of Heavy Metal.

Other bands referred to as Heavy Rock were also influential in this genre such as **Deep Purple** and **Led Zeppelin** along with **Alice Cooper**, **Kiss**, **Aerosmith**, **Van Halen** but none are metal.

**Iron Butterfly** with their 1968 song "In-A-Gadda-Da-Vida" were another early influence on the heavy metal genre.

**Judas Priest**, formed in England in 1969 are an early example of British Heavy Metal. As was **Motorhead** (1975-2015).

**Mountain** - a US band formed in 1969 by Leslie West and Felix Pappalardi are another early influential heavy band.



## SUBGENRES - *there are numerous subgenres, we will look at just a few.*

### Thrash Metal:

The BIG FOUR are Metallica (formed 1981 Los Angeles, USA), Slayer (formed 1981 California, USA), Megadeth (formed 1983 Los Angeles, USA), Anthrax (formed 1981 New York City, USA). Grew in popularity through the 1980s. Sepultura from Brazil also fits into this category (and perhaps ventures into Death Metal).



**Death Metal**: one of the more extreme versions of metal featuring growling, rasping vocals and violent satanic themes. Emerged in the early 80s and reached its peak in the early 90s.

Bands responsible for its beginnings **Venom** (Newcastle UK - formed 1978), **Death** (Florida, USA - formed 1984), **Possessed** (San Francisco, USA - formed 1983).



**Glam Metal** (The 80s) Bon Jovi, Motley Crue, Poison - using the term metal for any of these bands is not really appropriate. Yes they have heavy guitar riffs, but their songs are very pop rock. *Not sure who invented the term "Glam Metal"*. **Joan Jett** probably fits in this category, along with her previous band **The Runaways**. In fact all of these bands are simply just hard rock bands.

## **Late 70s New Wave of British Heavy Metal (NWOBHM):**

**Iron Maiden** (formed in London, 1975 and still performing) are classified in this category. Of interest, lead singer Bruce Dickinson is a qualified airplane pilot.



1980 Iron Maiden

1981 Killers

1982 Number of the Beast

1983 Piece of Mind

2015 The Book of Souls

**Saxon** is another NWOBHM band

**All female English group** **Girlschool** (London, 1978 - present) is one of the few female groups working away in the heavy category.



**Nu Metal:** **Slipknot**(heavy metal, Des Moines Iowa 1995), **Linkin Park**(California, 1996), **Limp Bizkit**(Jacksonville, Florida, USA - 1994), **POD**(1992, San Diego, USA - Christian rock), **Korn**(California, 1993)

**Linkin Park** not exactly metal - more rock; vocals clean and melodic; has occasional heavy guitar riffs and occasional rapping.



**P.O.D** is often referred to as a Christian metal band.

**Slipknot** has a very confronting image.

## **Other Popular Metal Bands**

**Pantera** (Texas, 1981) - heavy metal

**WASP** (formed Los Angeles, California, 1982) - heavy metal

**Nine Inch Nails** (formed Cleveland, Ohio 1988) - alternative metal

**Marylin Manson** (began releasing music in 1994) - heavy metal

**White Zombie** (New York City 1985) - heavy metal

**Rage Against the Machine** (formed in Los Angeles, California, USA 1991) - a blend of heavy metal, rap, punk rock and funk

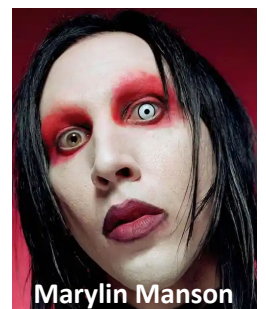
**Tool** (formed Los Angeles, California, USA 1980) - alternative metal

**System of a Down** (1994 California, USA) - heavy metal

**Ratt** (formed Los Angeles, California, USA 1976) - glam metal !?

**Mudvayne** (formed Illinois, USA 1996) alternative metal/nu metal - incorporates aspects of death metal and thrash metal

**Bullet For My Valentine** (formed 1998 Wales, UK) – heavy metal/thrash metal



**German Bands:** **Scorpions** (Germany 1965). Germany has a very big heavy metal scene. Also Sodom(since 1981), Rammstein (since 1994), Kreator (since 1982), Accept (since 1968), Helloween(since 1984), Destruction (since 1982), The Ocean( since 2000), Heaven shall Burn(since 1996)

**Popular bands in the heavy category** but not metal are **Guns n Roses** (hard rock, Los Angeles, California, USA 1985-present), **Def Leppard** (formed Sheffield, UK 1975)

**Two bands formed in the 70s and classified (albeit dubiously) as heavy metal are**

**Quiet Riot** (Los Angeles, California, USA 1973) - had a couple of hits "Bang Your Heads" and "Cum Feel The Noize" - the latter being an old Slade Song. Notable member is guitarist Randy Rhoads who turns up subsequently on Ozzy Osbourne's first two solo albums.



**Twisted Sister**(New Jersey, 1972 - present) Dee Schneider on vocals "We're Not Gonna Take It"

Both have significant pop dimensions.

---

## The Driving Forces



**Black Sabbath:** Ozzy Osbourne (lead vocals), Tommi Iommi (guitar), Geezer Butler (bass), Buil Ward (drums)  
Birmingham, UK 1968

**Led Zeppelin:** Robert Plant (lead vocals), Jimmy Page (guitar), John Paul Jones (bass), John Bonham (drums)  
London, UK 1968

**The Stooges:** Iggy Pop (vocals), Ron Asheton (guitar), Scott Asheton (drums), Dave Alexander (bass)  
Michigan, USA 1967

---

**Covers:** one of the most amazing covers is Johnny Cash's version of the Nine Inch Nails song "Hurt". Also his version of the Soundgarden song "Rusty Cage". Both produced by Rick Rubin (whose work includes Metallica, Slayer).